

SEWING INSTRUCTIONS.

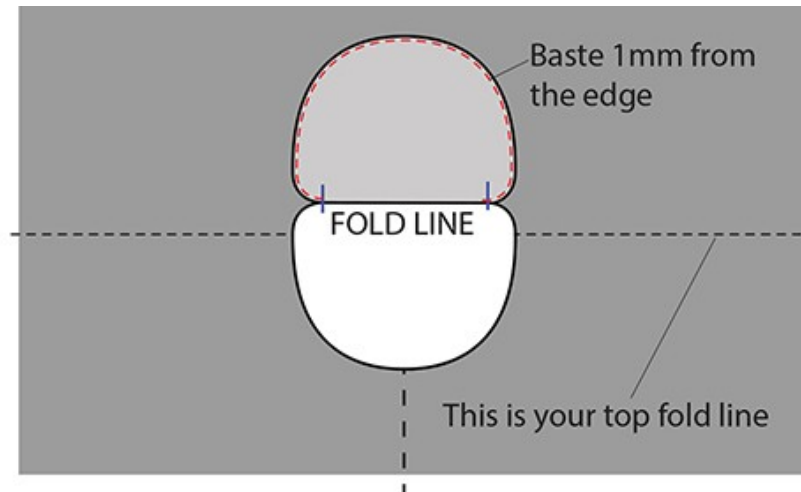
Let's start putting the dress together! Follow the instructions and diagrams below to help you out!

IMPORTANT THINGS TO REMEMBER: When you stitch jersey fabric, you need to stretch all seams as much as you can while you stitch to make the seams elastic. If you do not stretch the seams when stitching, your seams will break when you try to put the garment on!!!! The only seams you do not need to stretch too much are twin needle seams - you need to stretch them just a bit for elasticity.

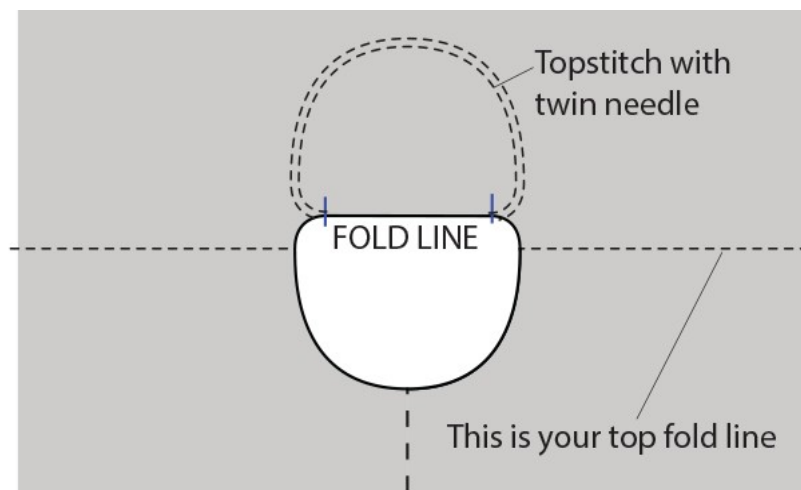
Wrong side of fabric

Right side of fabric

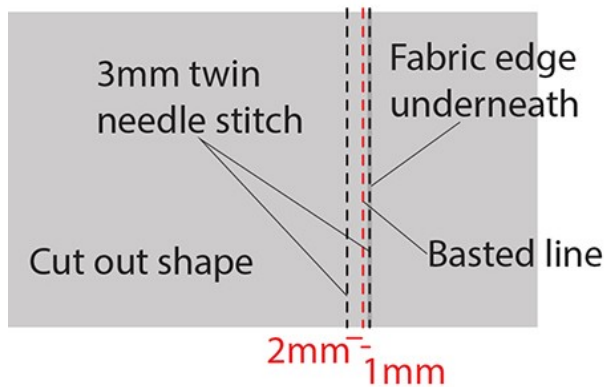
1. Begin with the neckline. Your neckline has been partly cut out, with the neck back folded back and pinned with wrong sides of the fabric facing each other. Baste it 1mm from the edge.



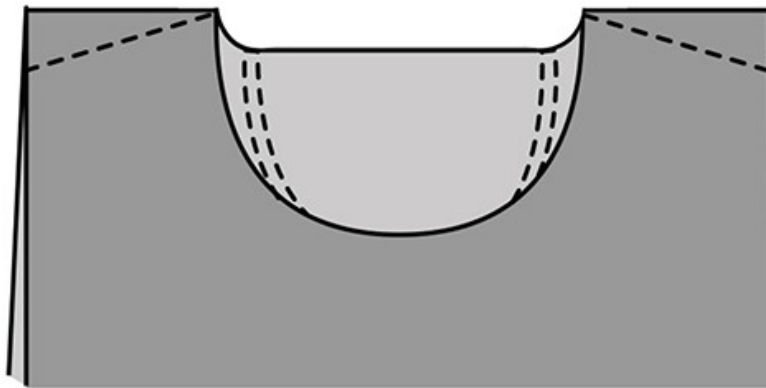
2. Using the basting line as your guide, top stitch the neck back in place with a twin needle. As the twin needle seam creates two parallel lines on one side only and looks like zigzag underneath, you need to top stitch on the right side of the fabric.



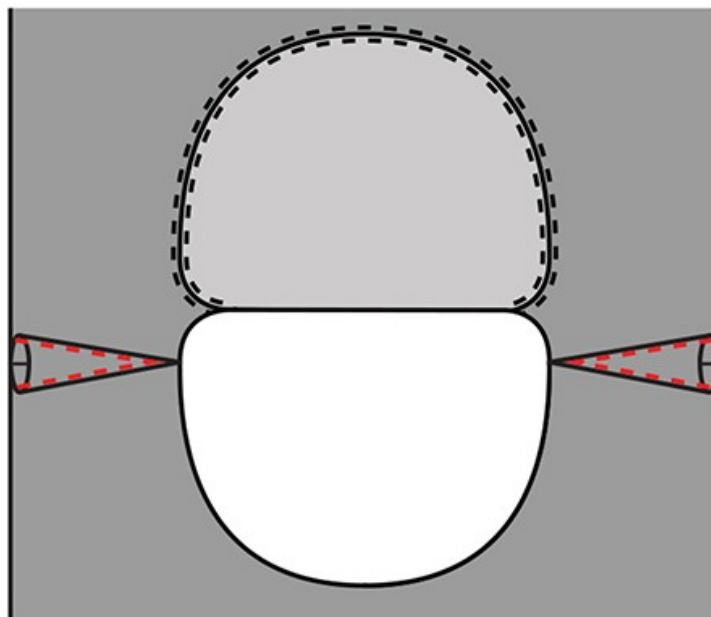
Stitch with one needle 1mm away from your basted line towards the edge of the cut out shape (refer to the diagram on the next page).



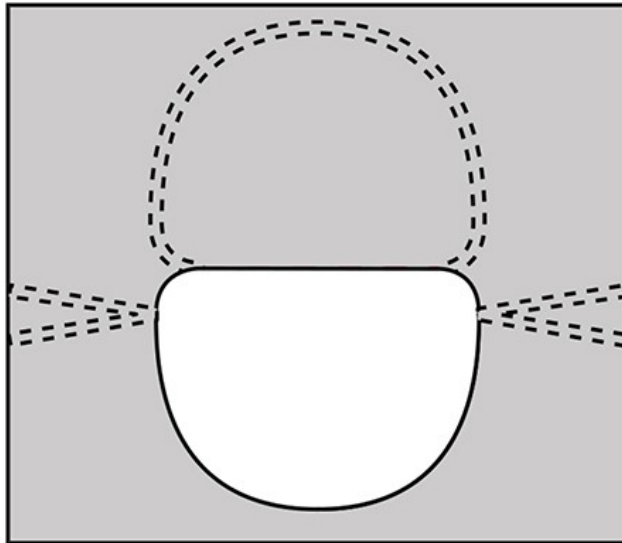
- Once the neckline shape is stitched in place, sew the shoulder seams. Fold the dress on the marked fold at the top with right sides of fabric inside. Locate your marked shoulder seams and sew along the lines. Do not cut away anything!



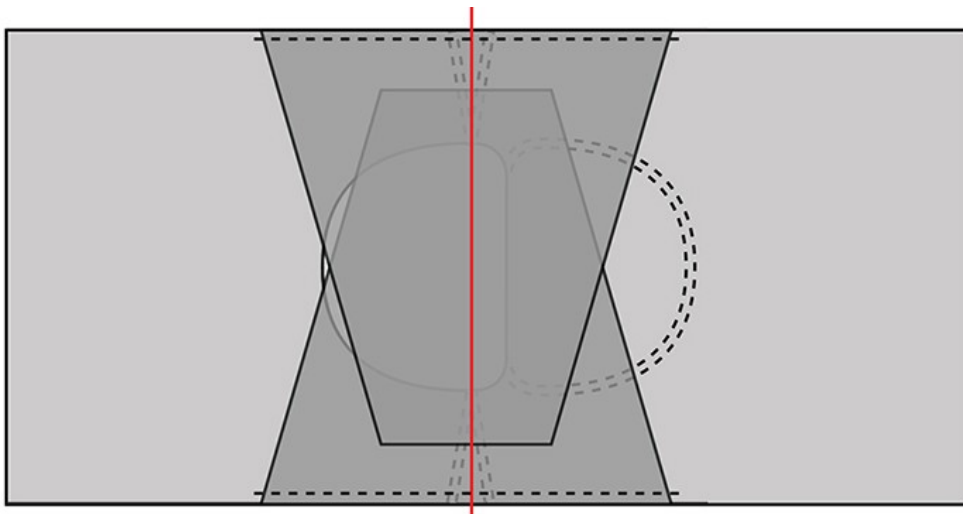
- Lay the seams flat and baste 1mm from the edges as shown below creating two triangles. Distribute the fabric equally on both sides of the seam.



5. Top stitch the triangles in place from the right side of fabric using the twin needle. Use the basted line as a guide in the same way as you did to stitch the neckline cut out shape.

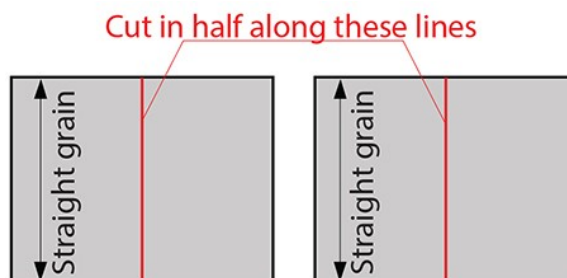


6. Align the sleeves on the dress as shown below with right sides of fabric facing each other. Match the centre of the sleeve crown with the centre of the shoulder seam. Pin, stitch 1cm from the edge and overlock the seam only. Press the sleeves outside with the seam directed towards the sleeve.

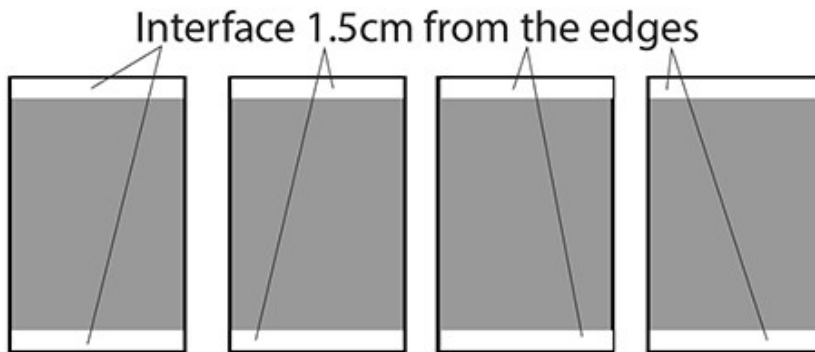


STEPS 7-10 ARE FOR SIZES 12-16. GO STRAIGHT TO STEP 11 FOR SIZES 6-10.

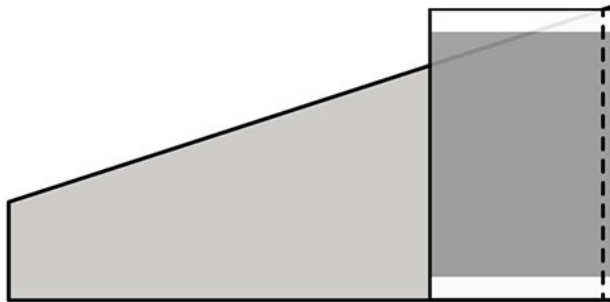
7. Place the two belt extension pieces in front of you as shown in the diagram below and cut each in half.



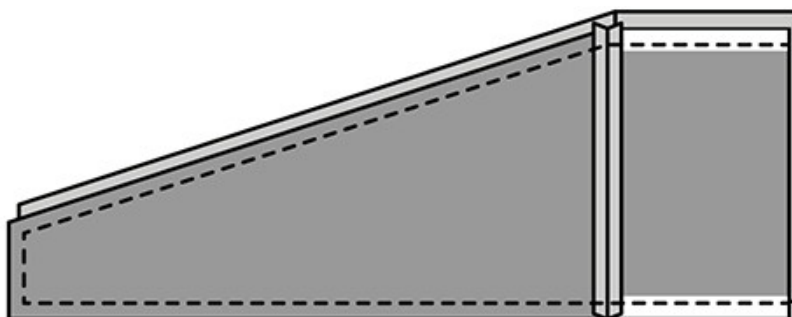
- Interface the top and bottom edges with 1.5cm wide cotton interfacing. This step is necessary as the belt extension pieces are cut on the cross grain whereas the main belt pieces are cut following the fabric grain. To prevent them from stretching too much, seams need to be interfaced. I do not recommend interfacing the whole piece as it will create extra bulk in this area.



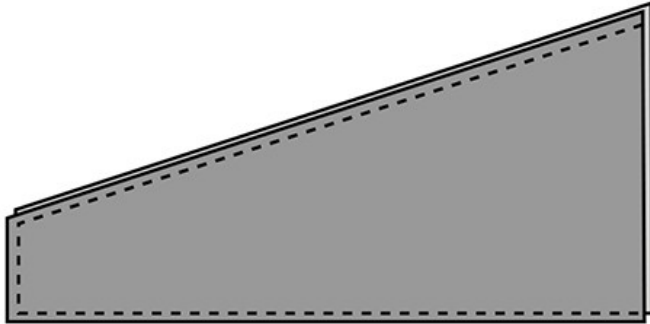
- Connect the extension pieces to the main belt pieces as shown below. Press the seams open. Stitch with the extension piece on top (as shown below) as it has less stretch in it.



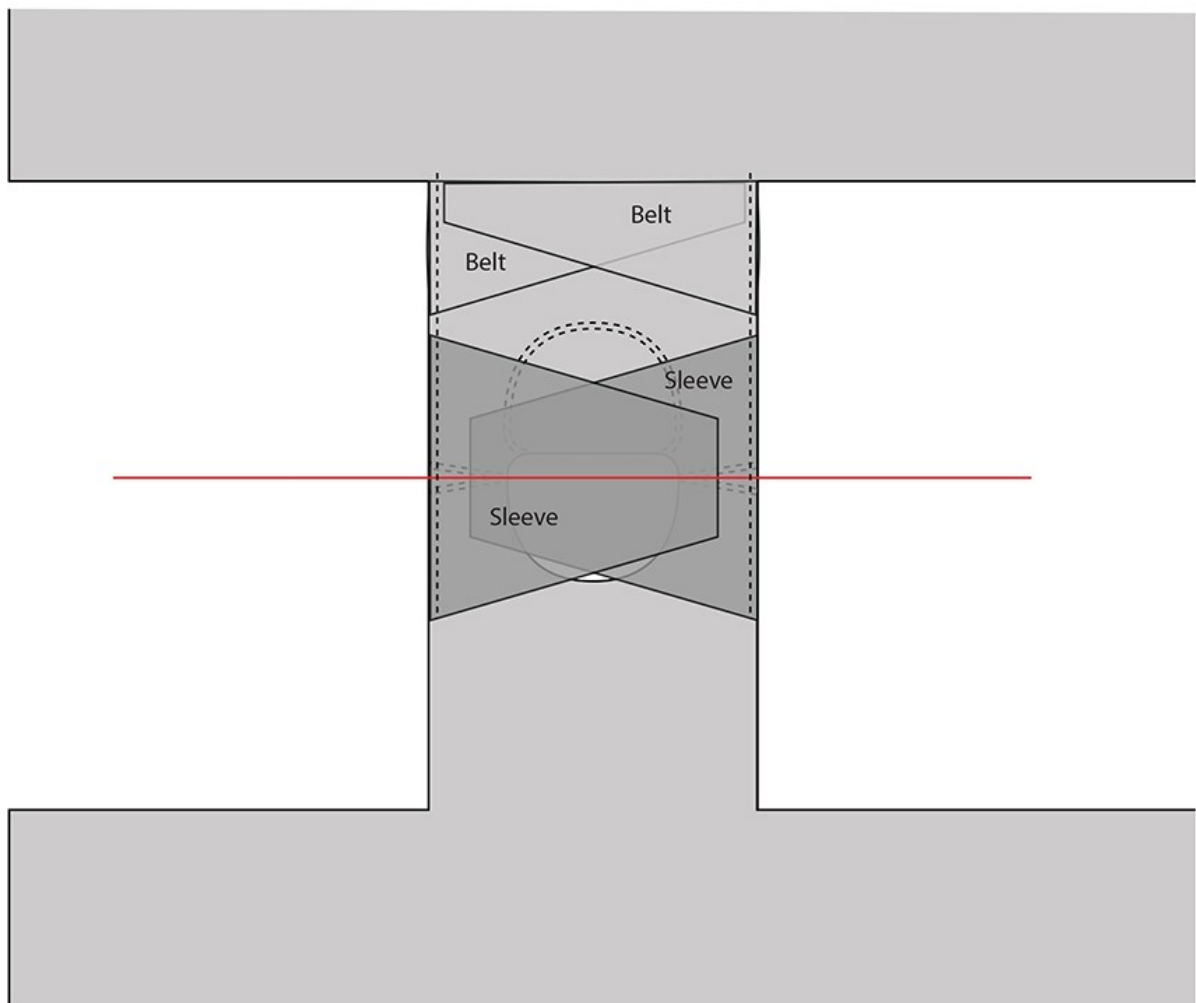
- Connect the belt pieces together as shown in the diagram below, stitching 1cm from the edge. Turn inside out and press. **SKIP STEP 11.**



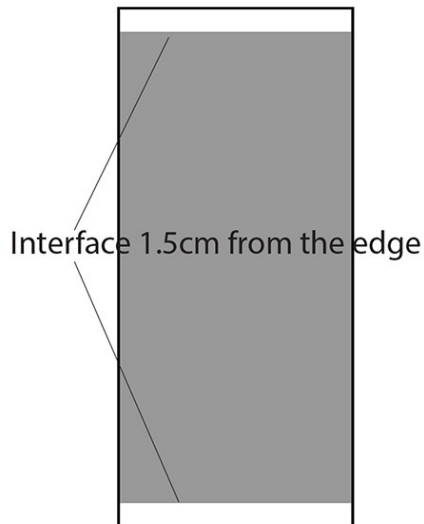
11. Fold the belt pieces inside out so that the right sides of fabric are together and stitch 1cm from the edge as shown below. Turn the right way out and press.



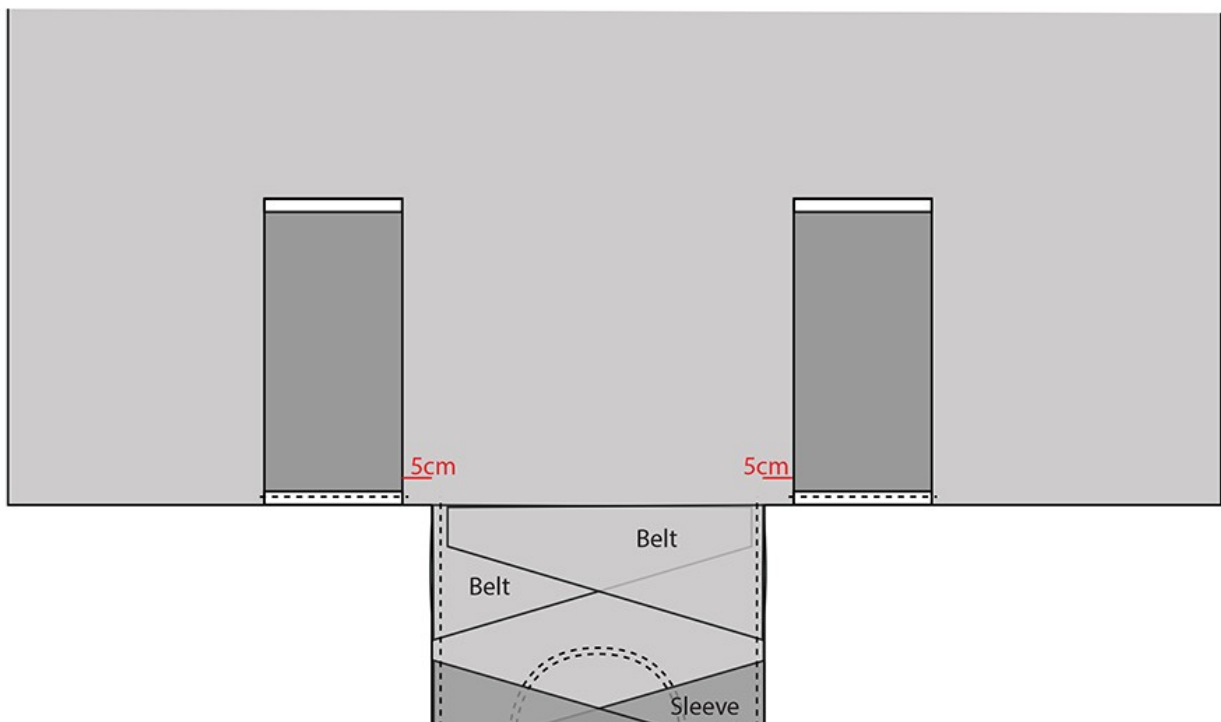
12. Align the belt pieces with the edge of the dress on the right side of fabric as shown below. Place the belt so that straight edge is parallel with the fabric fold line of the dress. Pin and stitch 1cm from the edge. Do not overlock.



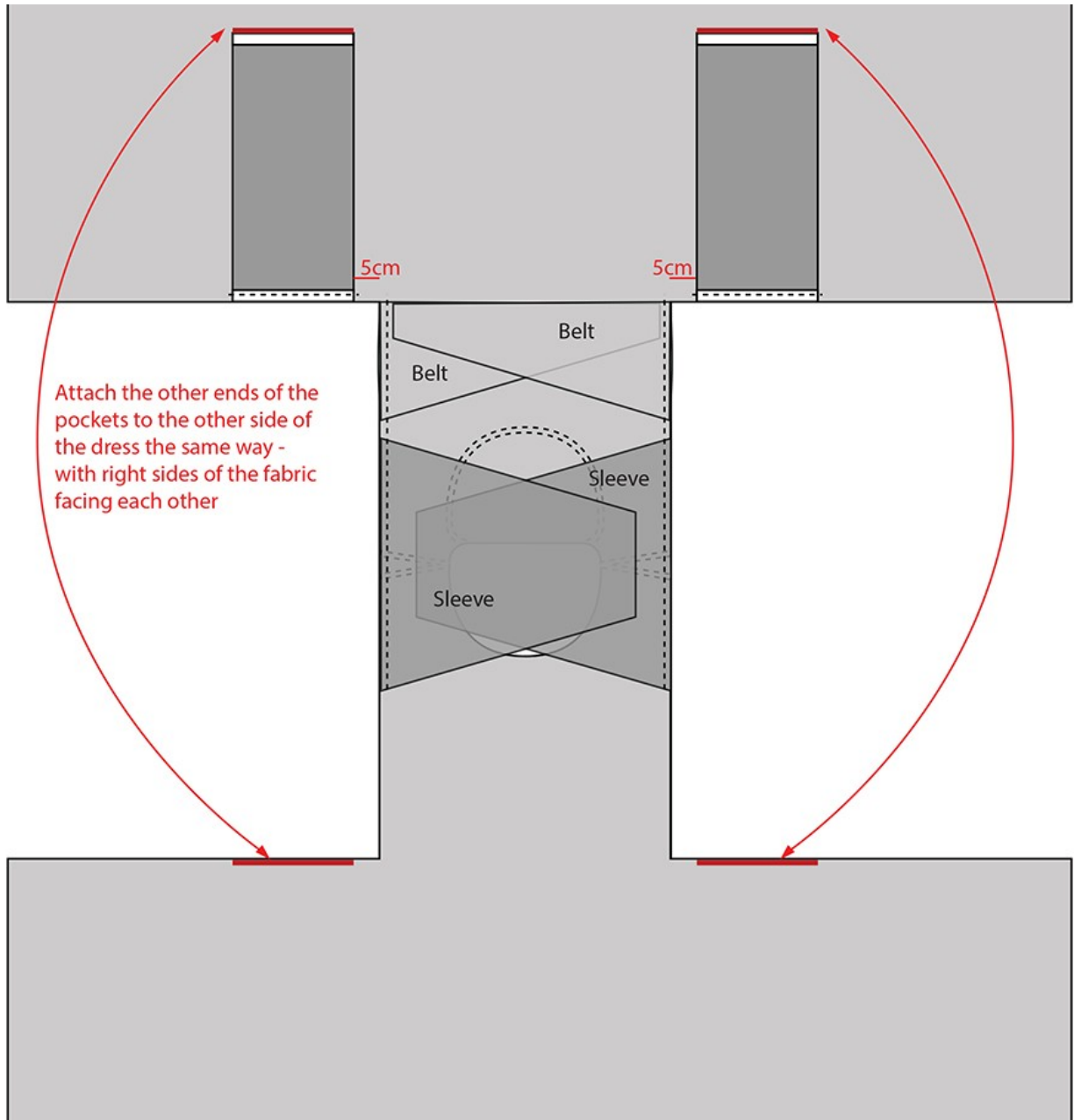
13. Cut four pieces of interfacing 1.5cm x 18cm. Iron these onto the top ends of the pockets. They will prevent the seams from stretching.



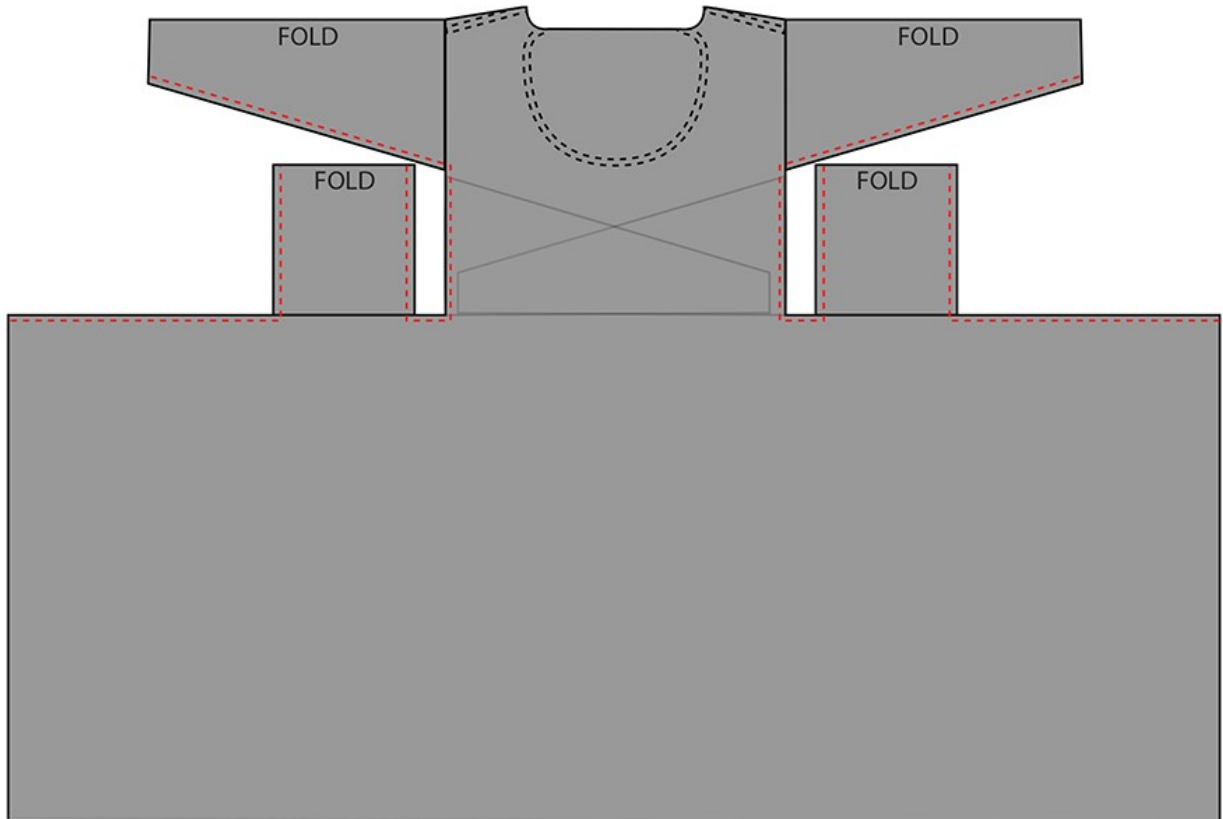
14. Place pockets on the back dress skirt 5cm away from the intersection with the dress top with right sides of fabric facing each other. Stitch one side of each pocket piece in place 1cm from the edge so that your seam goes 5mm into the interfacing.



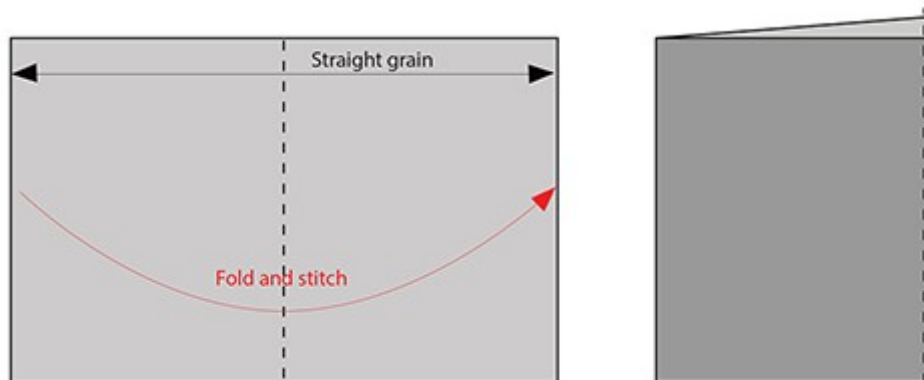
15. Attach the other side of each pocket to the other side of the dress as shown below. Press pockets away from the dress with the seams directed towards the pockets.



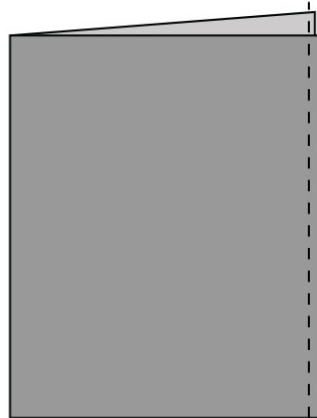
16. Fold the dress in half with the right side of the fabric inside and stitch the side seams together with the pocket sides and the sleeves. See diagram below – dashed red lines show the stitching you need to do. Stitch 1cm from the edge. Make sure the belt pieces stay on the right side of the dress. Overlock the seams and press them towards the back of the dress.



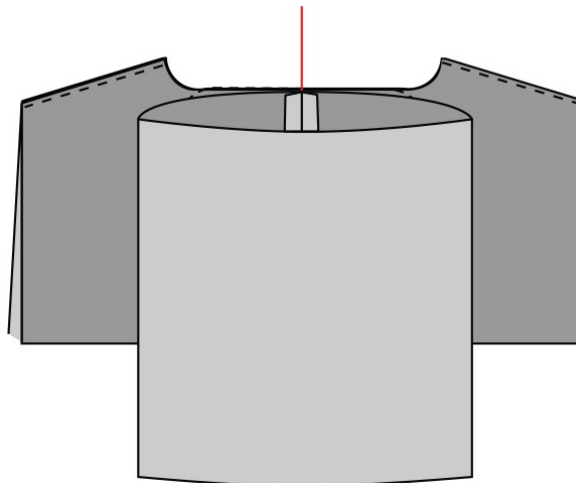
17. Fold the shorter ends of the collar piece together with the right side of fabric inside and stitch. **IMPORTANT:** if you are making size 12 to 16 and your fabric width is 150cm stitch 2cm from the edge. For 160cm wide fabric stitch 1cm from the edge. If you are making other sizes, stitch 1cm from the edge regardless of your fabric width. Press the seam open.



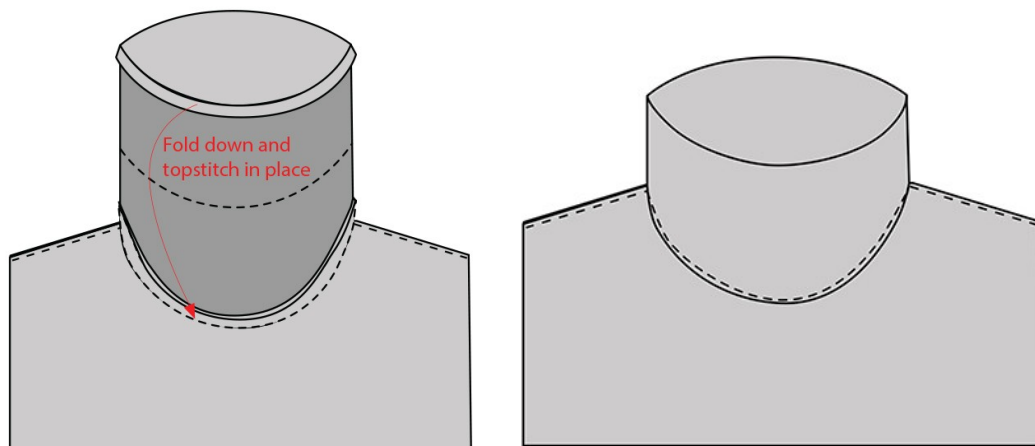
18. Your collar will be in a tube shape. Press the seam open. Turn the tube inside out.



19. Attach the collar to the neckline. Place one edge of the collar tube with the **RIGHT SIDE OF FABRIC** toward the **WRONG SIDE** of the dress neckline, aligning the collar seam with CB (Centre Back). Pin in place. Your collar might be a few centimetres smaller or larger than your neckline (depending on your size), stretch the fabric to distribute it evenly all around. Stitch 1cm from the edge.

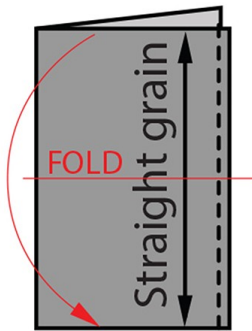


20. Press the collar up with the seam pointing towards the collar. Turn the dress inside out. Fold 1cm from the other edge of the collar inside, align with the first seam and top stitch 1mm from the fold as shown in the diagrams below. You will get a tall tube-like collar (about 20cm tall depending on your size).

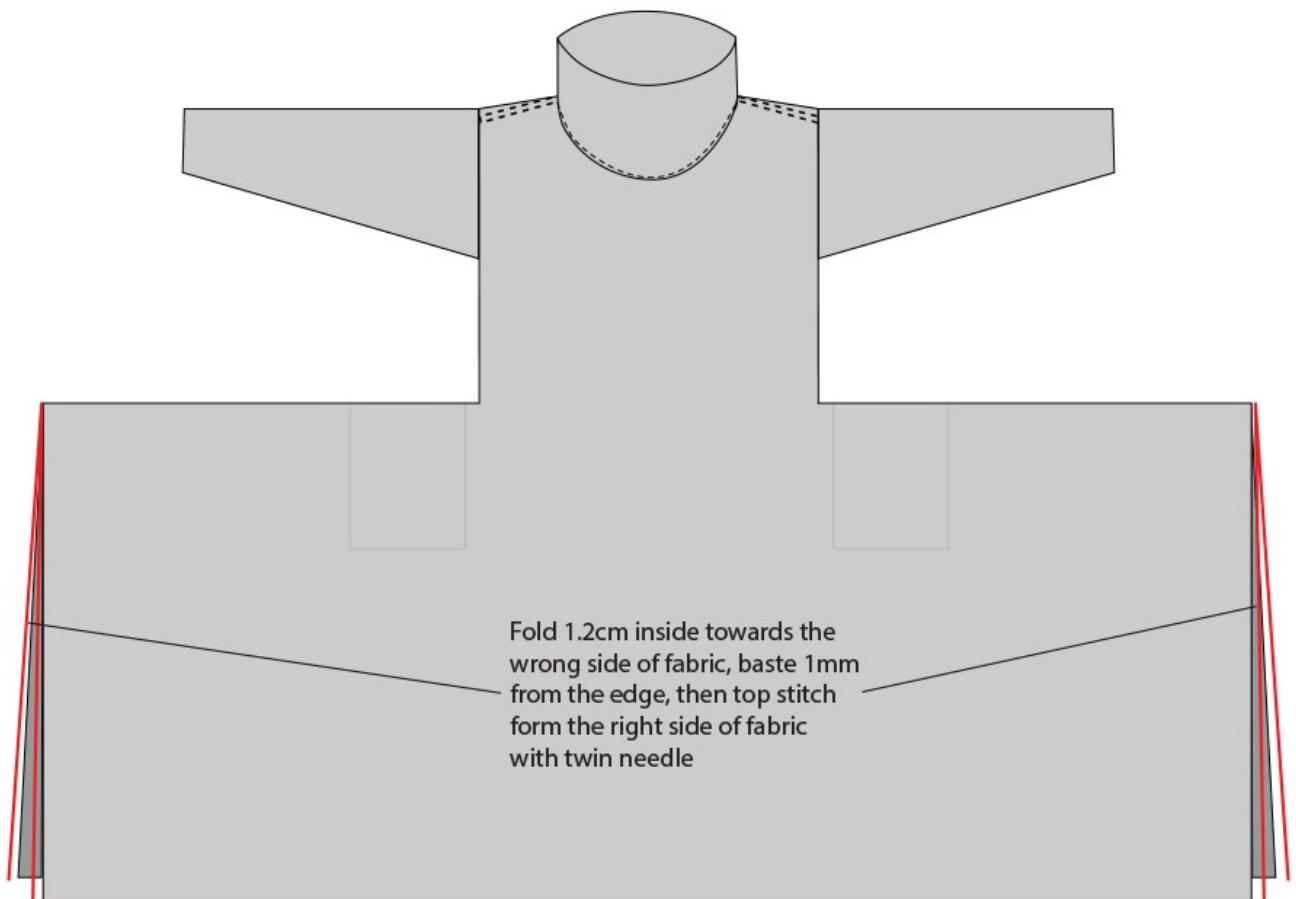


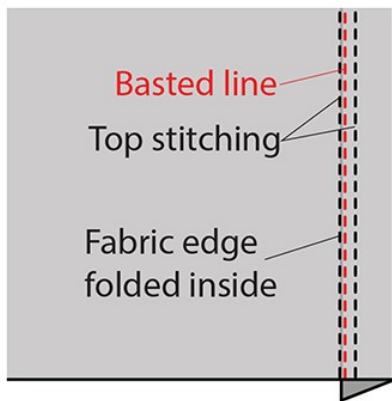
21. IF YOU ARE MAKING SIZES 12-16, simply top stitch the sleeve wrist edges in place in the same way as the hem as described in STEP 22 and proceed to step 22 after that. IF YOU ARE MAKING SIZES 6-10 finish step 21 before proceeding further.

Fold the cuff pieces with right side of fabric inside and the straight grain sides together. Stitch. Press the seams open and fold the tubes in half. Attach the cuffs to the sleeve edges in the same way as you attached the collar to the neckline. Your cuffs will be slightly smaller or bigger than the actual wrist line of your sleeve depending on the size. Stretch to fit, distributing the amount evenly around. Pin and stitch.

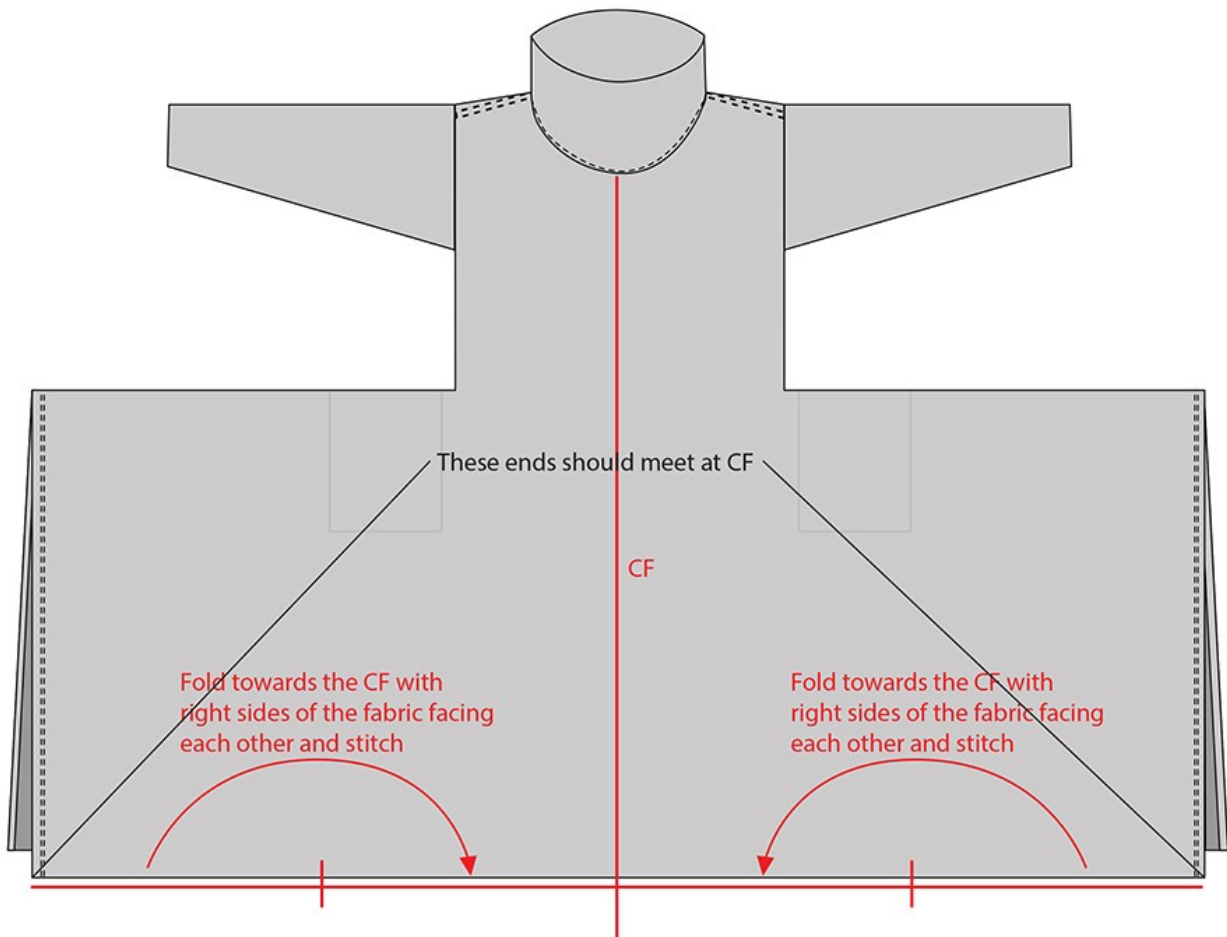


22. Hem the two side edges of the dress with a twin needle. To do that, fold the edges 1.2cm inside towards the wrong side of the fabric, baste 1mm from the edge and top stitch with the twin needle from the right side of fabric using the basted line as a guide.





23. Fold the bottom corners of the dress towards the CF as shown in the diagram below with the right side of fabric inside. Stitch and overlock. Turn inside out and press in place with the seams directed towards the top.



24. Tie the belt at the back. Congratulations! You have finished your dress! If you are going to share your creation on social media please tag me and use #annazerowastedress hashtag – I would love to see your results!

INSTAGRAM @victoriakonash
FACEBOOK @vixecodesigns