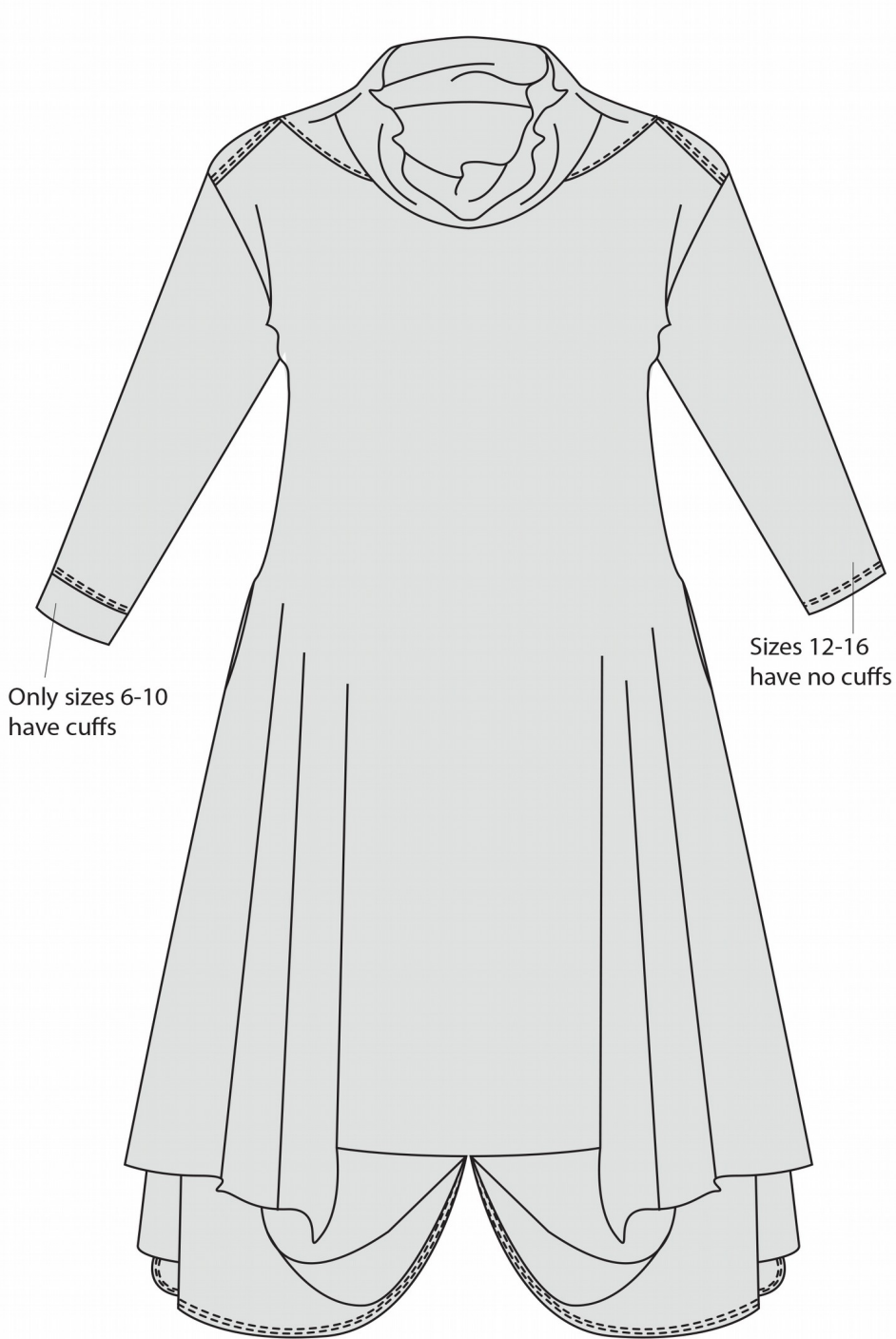
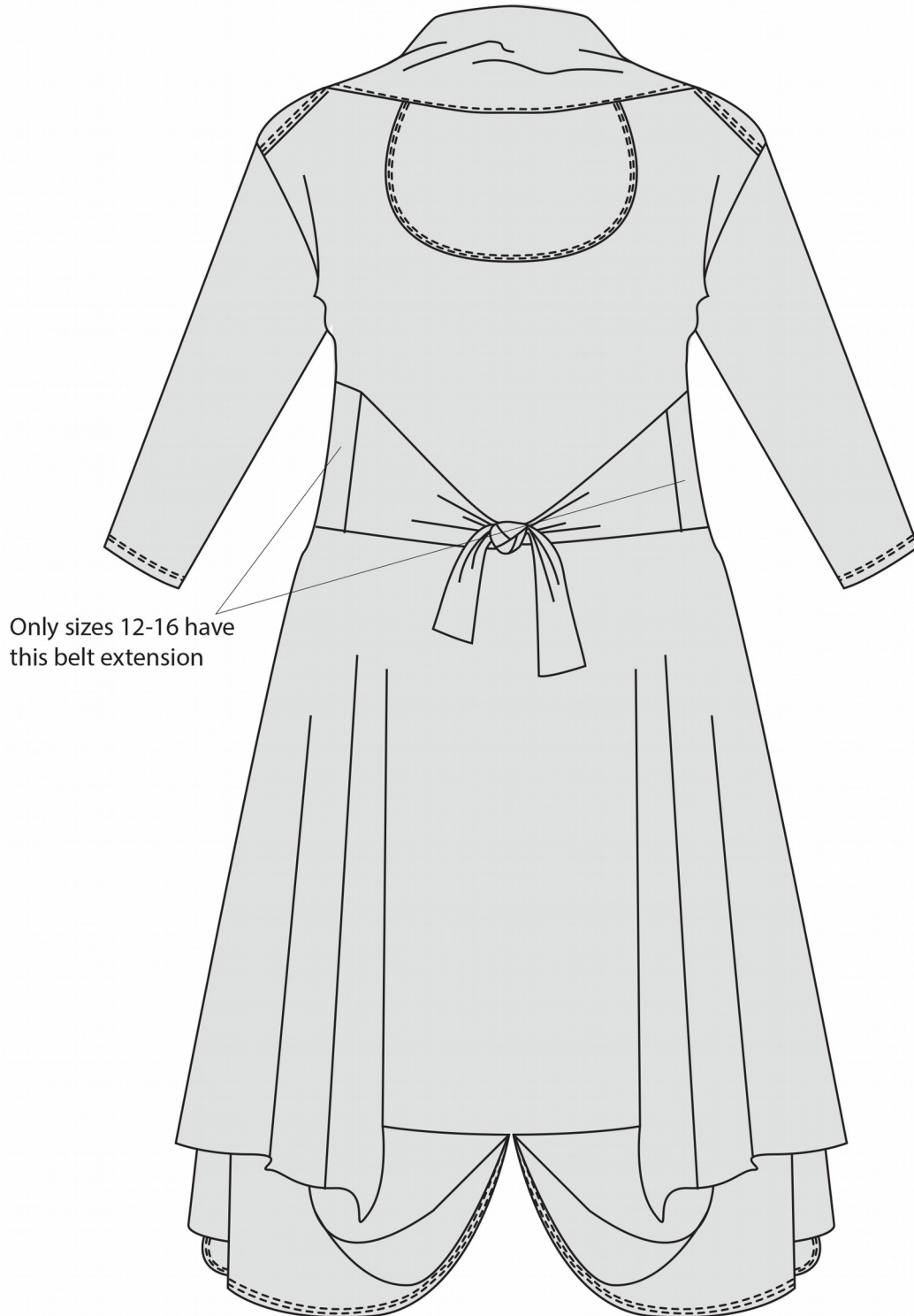


**ANNA ZERO WASTE DRESS**  
**SIZE RANGE: 6-16**

**FRONT**



## BACK



This pattern is for a beautiful, casual style jersey dress with side pockets. If you follow the instructions you will create a biodegradable compostable garment utilising 100% of your fabric. Yes! You will have no unnecessary fabric scraps left after you've completed this project!

This process is called zero waste fashion design – it integrates pattern cutting into the design process. Although it is not really new and has been applied widely in historical garments (such as kimonos, for example) in modern days it was reinvented and pioneered by a group of designers including – Timo Rissanen, Holy McQuillan, Maya Stabel, Juian Roberts and others. With this pattern I am offering you to dive into the world of zero waste fashion at your home and join the growing numbers of sewers who favour this innovative method of making clothes!

### SIZE CHART.

SIZE	6	8	10	12	14	16
Bust circumference	80.5cm	83cm	88cm	93cm	98cm	103cm
Waist circumference	61.5cm	64cm	69cm	74cm	79cm	84cm
Hip Circumference	91.5cm	93cm	98cm	103cm	108cm	113cm

**FABRIC RECOMMENDATION:** Any light to medium weight 100% natural wool or viscose jersey. Cotton or other fibres would be ok, but wool or viscose are ideal as they drape really well. You need jersey that drapes well for this dress to look great, but I do not recommend jersey fabrics with elastane or spandex added as the aim of this project is to create a biodegradable garment.

Originally the pattern was developed for 160cm wide fabric and it works as true zero waste pattern utilising all the fabric without any waste. As 160cm wide fabric is a less common width, the pattern has been adjusted for 150cm wide fabric. With this fabric width, you will have a tiny square of fabric left over for some sizes. You can use it as dishcloth. Wool is excellent for that purpose! :)

You can get light to medium weight 100% merino wool jersey 160cm and 150cm wide from this store <https://thefabricstoreonline.com> They have a beautiful range of colours!

### MATERIALS:

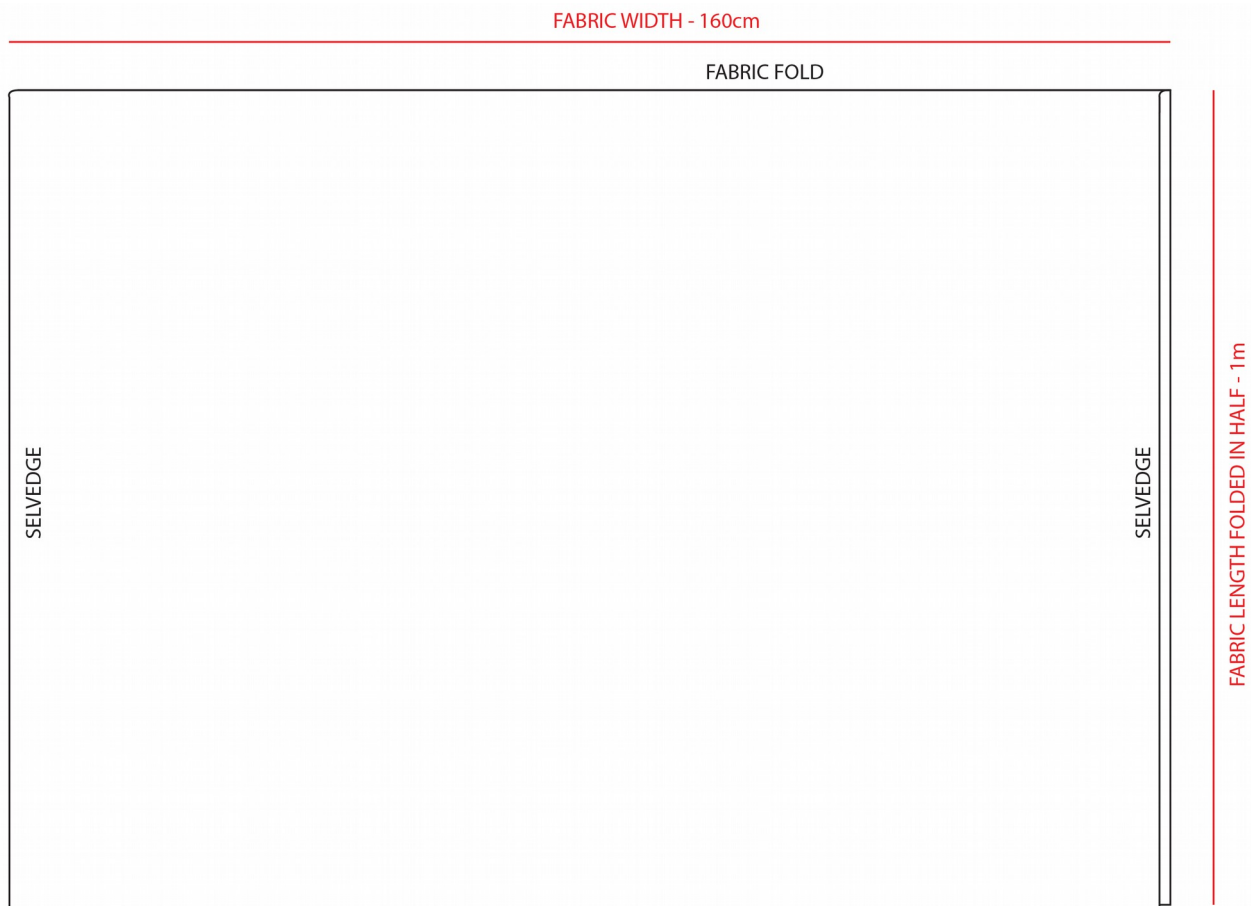
1. 2 metres of jersey fabric 160/150cm wide (*Because it is zero waste pattern where every piece of fabric is used to cut the garment width is important!!! If your fabric is narrower you will not be able to cut all the pattern pieces!*)
2. 100% cotton (or silk) all purpose sewing thread
3. 20cm of lightweight 100% cotton interfacing or 160cm of interfacing tape 1.5cm wide
4. Ball point machine needle size 70/10 (this is a special needle for stitching jersey fabric)
5. 3mm twin needle for top stitching some seam finishes. (If you don't have a 3mm twin needle you can use whichever one you already have – 2mm and 4mm will work as well).

**IMPORTANT THING TO CONSIDER:** This list of requisite materials consist of 100% natural fibre. This is to create a biodegradable, compostable garment. You can use other fabrics with elastane or spandex blend and all-purpose polyester thread, but this will prevent your garment from being biodegradable and compostable.

**NOTE: THIS DOCUMENT SET DOES NOT CONTAIN THE ACTUAL PAPER PATTERN. INSTEAD, THERE ARE CLEAR INSTRUCTIONS ON HOW TO FOLD AND CUT YOUR FABRIC TO GET THE PATTERN PIECES FOR EACH SIZE.**

**HOW TO CUT YOUR FABRIC:** Although the general shape of the dress is almost the same in each size, specific measurements vary from size to size. I have included instructions how to mark and cut your fabric for each size individually.

Let's get started! First fold your fabric in half as shown on the picture below and place it in front of you with the fabric fold at the top and selvedge edges on the sides.



Now go to your size document from here to mark the fabric!