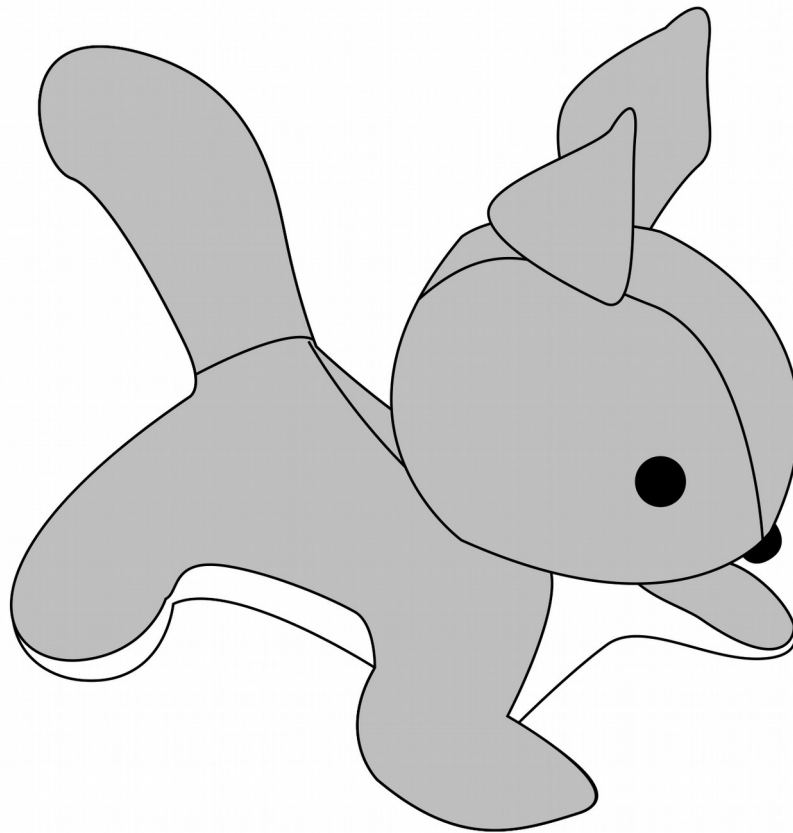


SQUIRREL SOFT TOY PATTERN



FABRIC RECOMMENDATION: You can literally go crazy here and use any medium to heavy weight fabric you like, even synthetic fur! You need two contrast colours. I used 100% cotton velvet.

MATERIALS:

1. 20cm of both of your chosen fabrics
2. two plastic or glass eyes and one nose. You can choose to embroider those with heavy cotton embroidery thread instead.
3. Head connection piece. You can see the pictures of how it looks like and how you can make one yourself at the end of this blog post:
<https://vixecodesigns.com/2017/08/vintage-toys-restoration/>
4. All purpose sewing thread
5. Stuffing of your choice. I used my old clothes that are beyond repair or donation cut up into tiny pieces as stuffing.

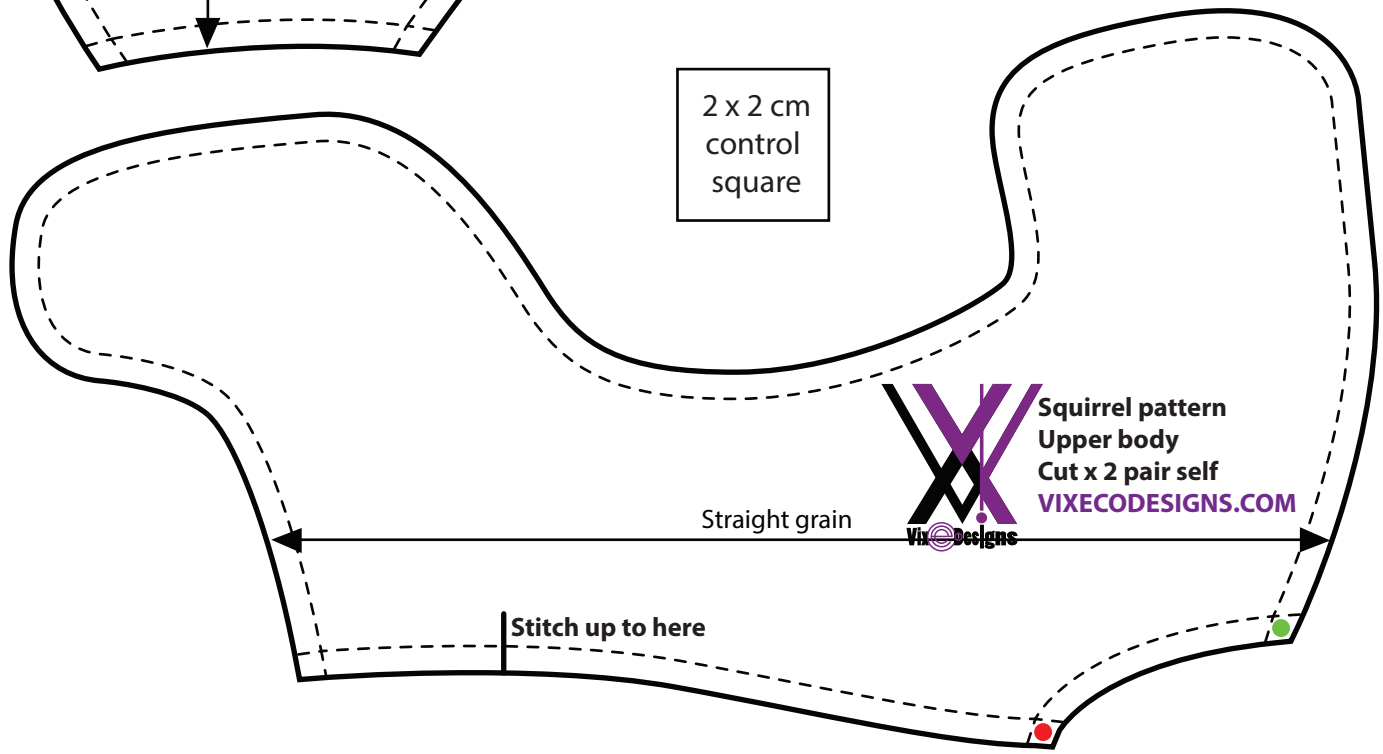
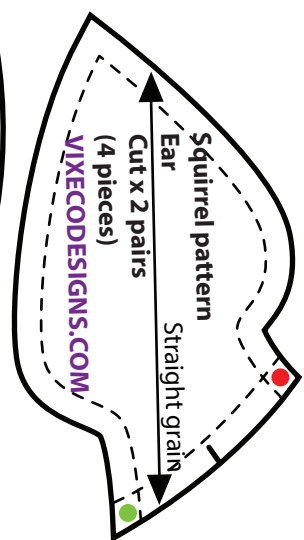
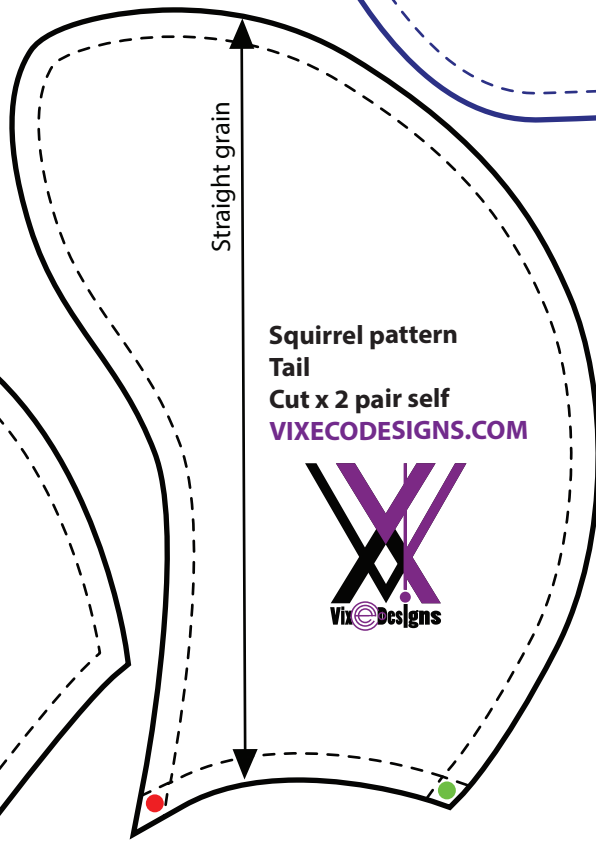
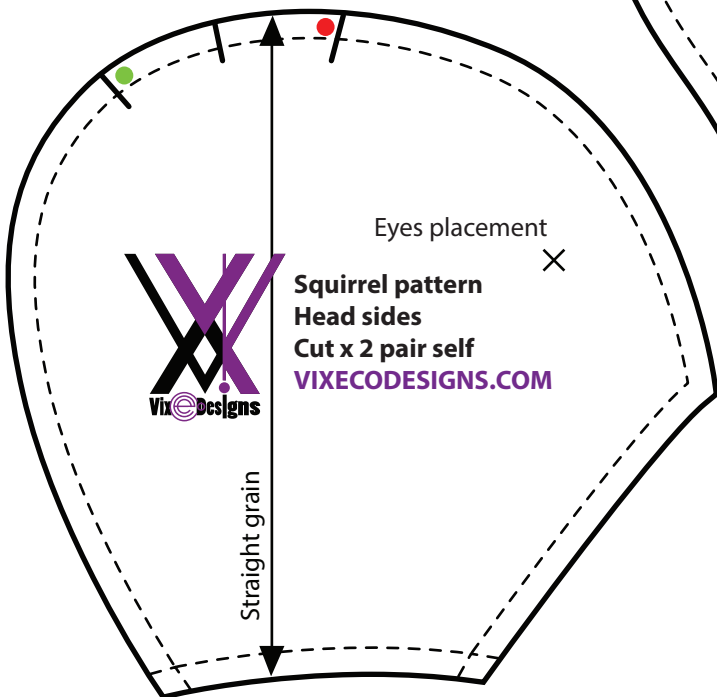
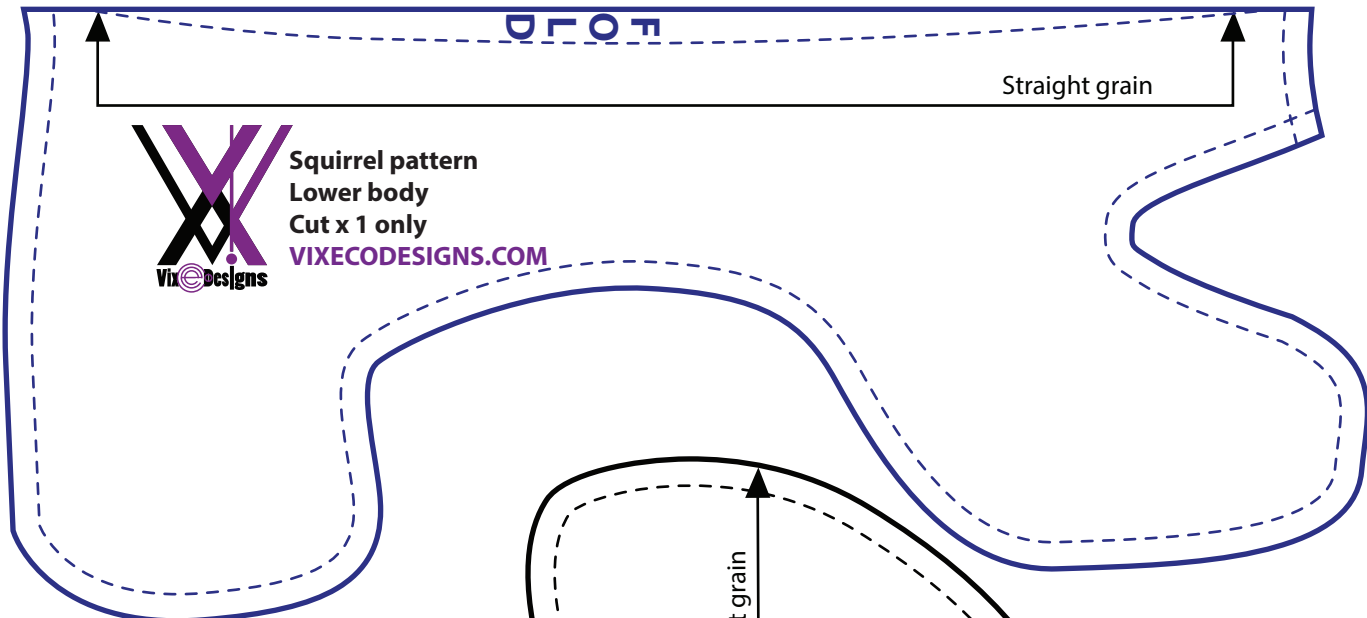
SEWING INSTRUCTIONS.

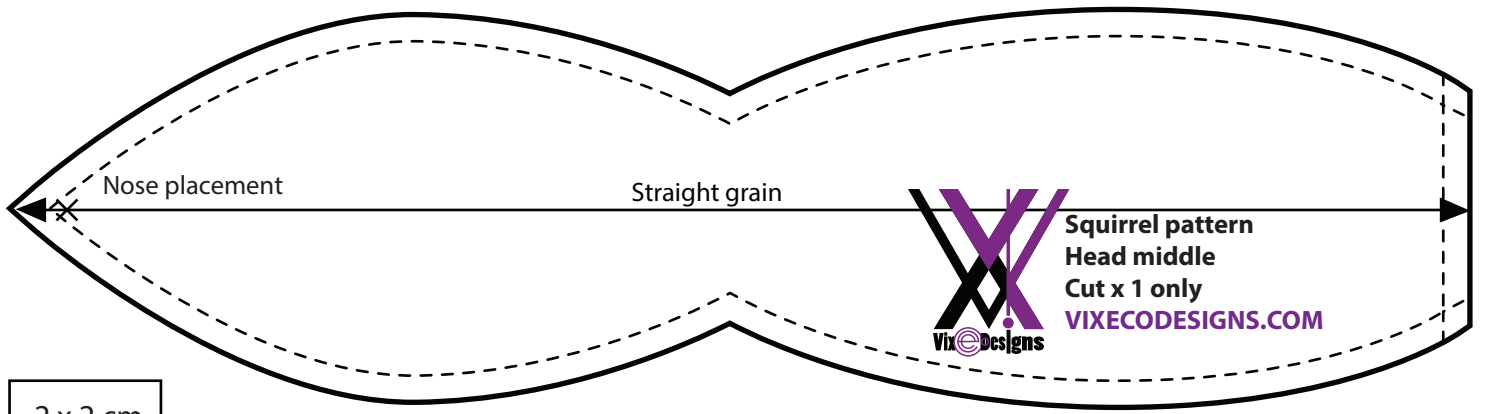
1. Cut pattern pieces out. You should have 12 pieces – two upper body, one lower body cut on fold, 4 ear pieces, 2 head side pieces, one head centre piece and two tail pieces. Lower body part needs to be cut in contrast colour, all other pieces are cut from the same colour.

2. Connect ear pairs together. Take two ear pieces and place them right side of fabric inside, stitch leaving the opening at the bottom. Do the same with the second ear. Attach ears to the head sides connecting green and red circles.
3. Attach head centre piece to the head sides making sure the ears stay on the right side of fabric.
4. Attach tail parts to the body upper sides making sure red and green circles are aligned.
5. Connect upper body parts with tail attached already together.
6. Attach Lower body part to the upper body leaving opening where the head has to be. Stuff the body part tightly.
7. Attach eyes and nose details to the head if you are using glass or plastic ones. If you chose to embroider them instead you can leave it to the very end.
8. Stuff the head.
9. Attach the head to the body. Use extra strong thread to gather the head opening and the body opening. Insert head connection piece one part inside the head and one part inside the body and gather threads tightly.
10. Congratulations! You have completed your squirrel soft toy! If you are going to share your creation on social media please tag me! I would love to see your results!

INSTAGRAM @victoriakonash

FACEBOOK @vixecodesigns





2 x 2 cm
control
square

- Cut lines
- Cut this pattern piece in contrast fabric
- - - Seam lines
- • Connect the dots by colour when attaching pieces to hether