

SQUARE BOX UNFOLDING POUCH PATTERN.



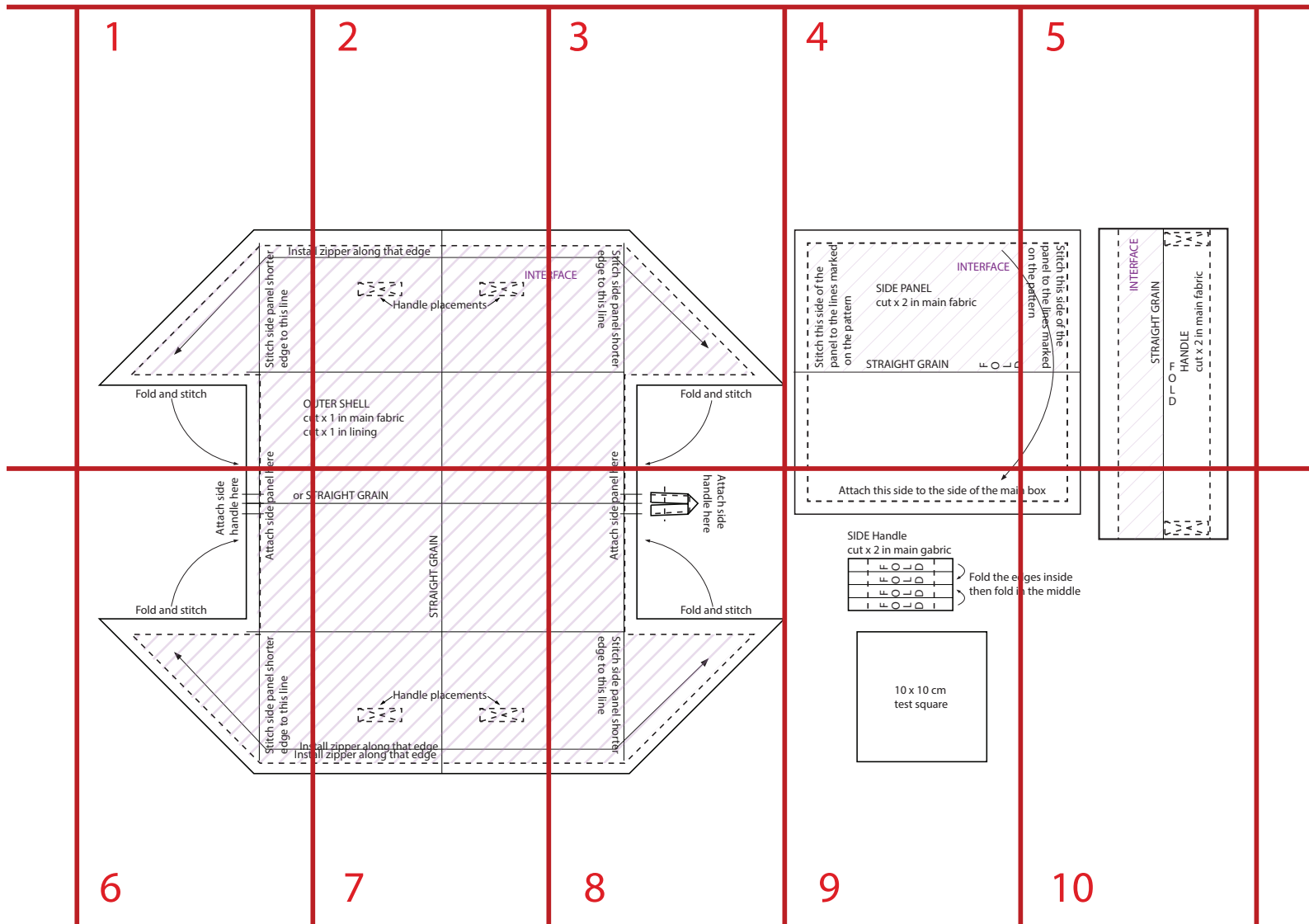


SQUARE BOX UNFOLDING POUCH PATTERN - DETAILS.



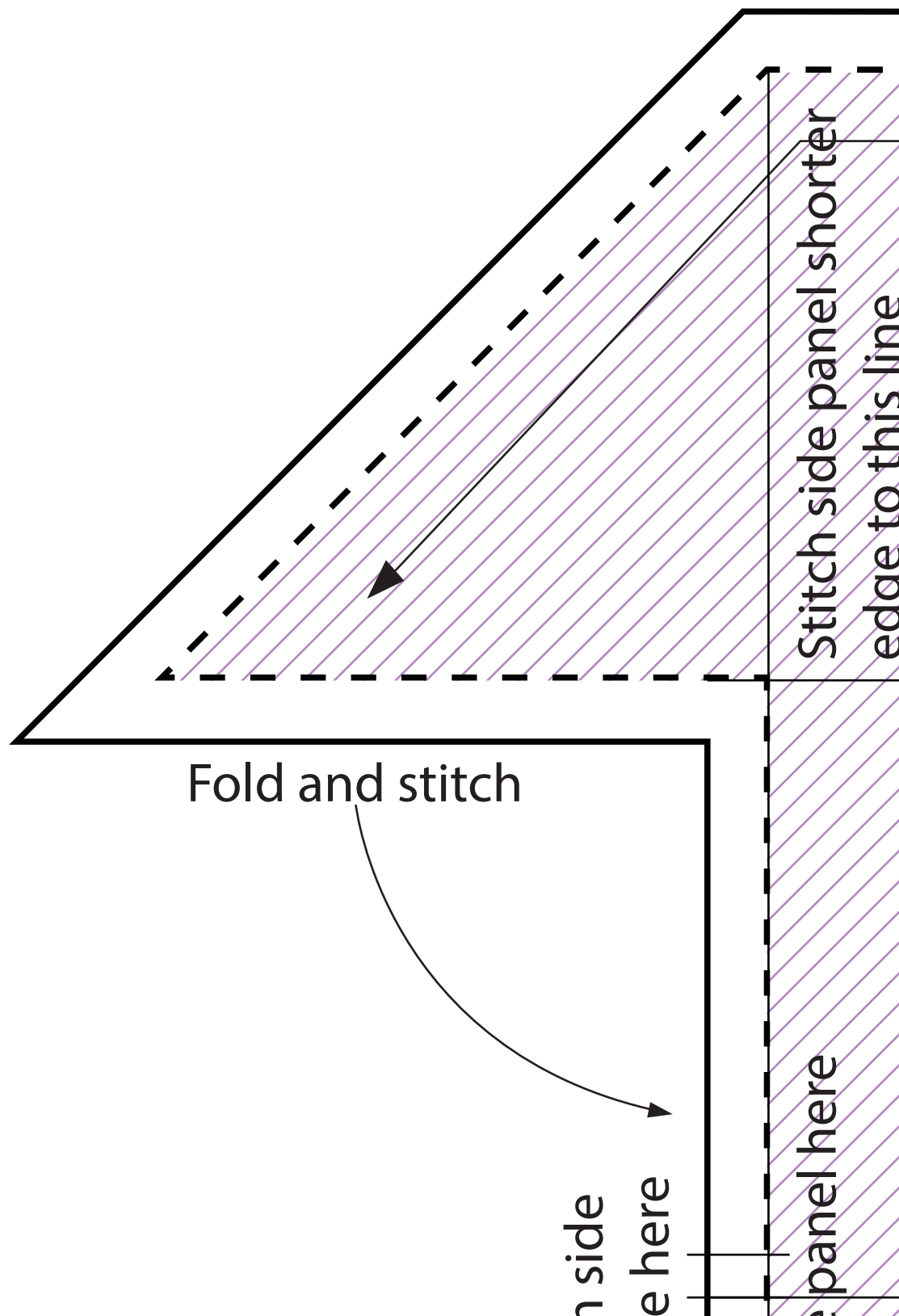
## SQUARE BOX UNFOLDING POUCH PATTERN.

### Document set up.



### MATERIALS NEEDED:

1. 50 cm of heavy weight cotton or linen fabric for the outside;
2. 50 cm of lightweight cotton fabric for lining;
3. 50 cm heavy weight fusible cotton interfacing;
4. 58 cm long zipper.

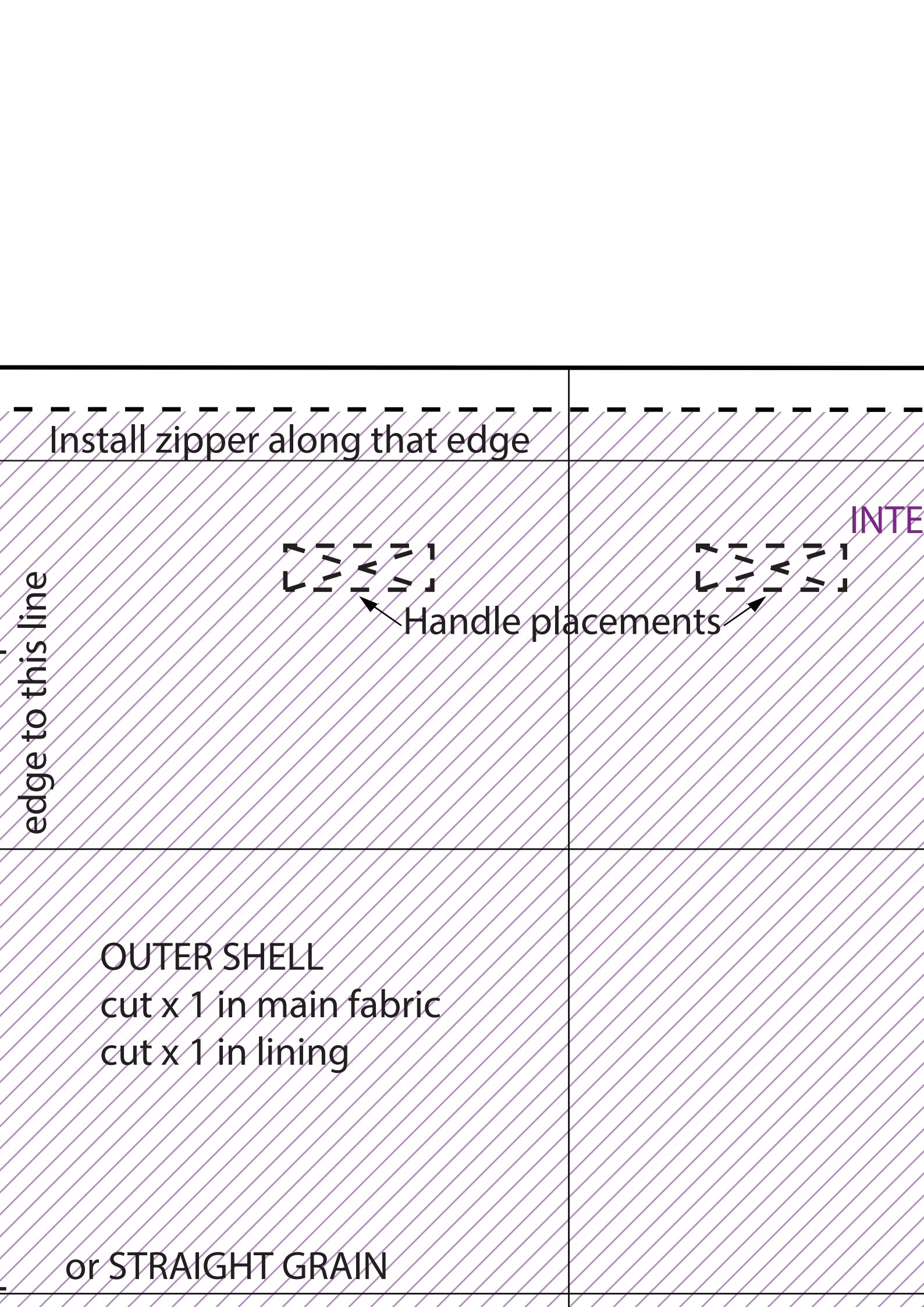


Fold and stitch

Stitch side panel shorter  
edge to this line

n side  
e here

e panel here



Install zipper along that edge

INTER

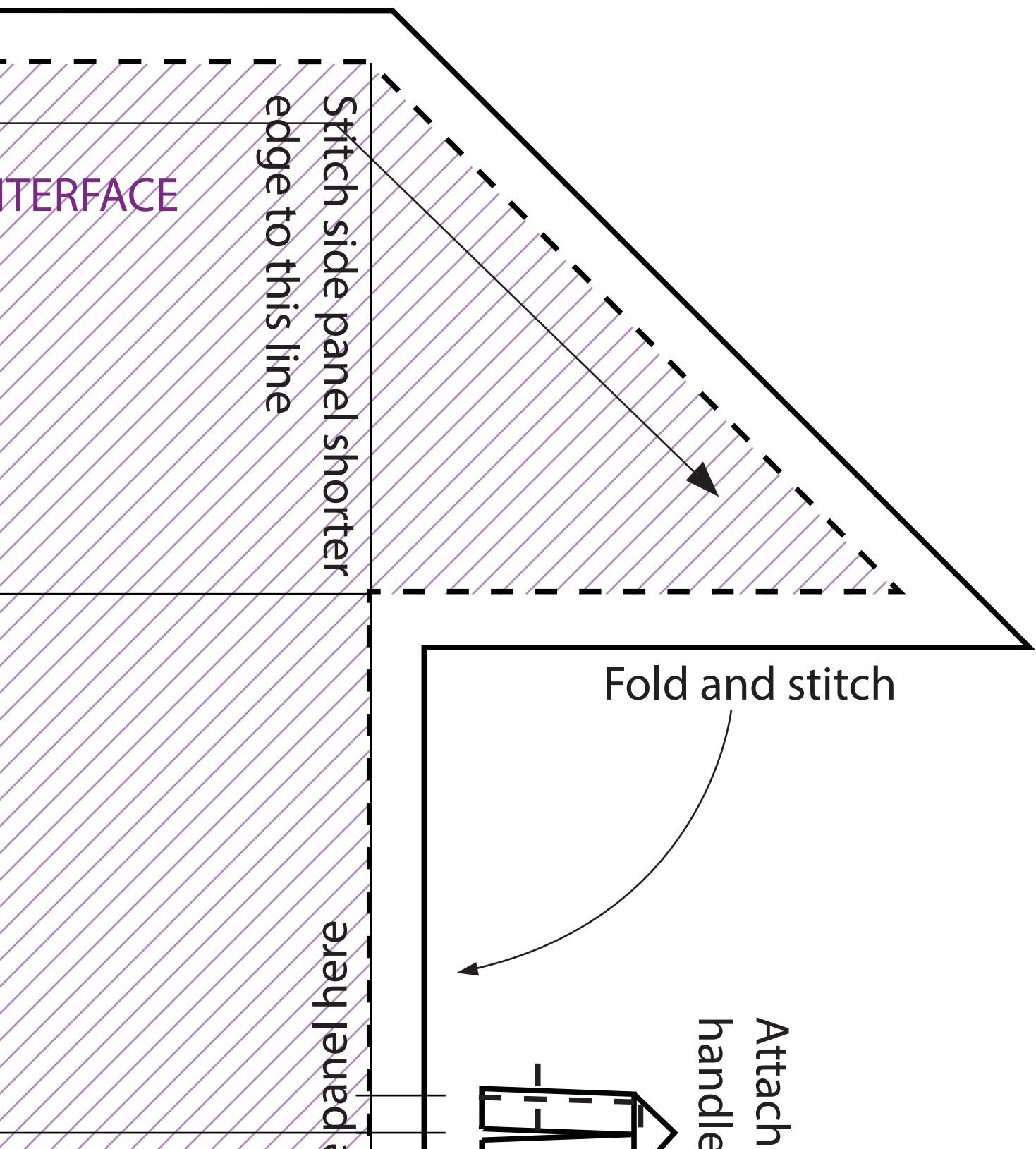
edge to this line

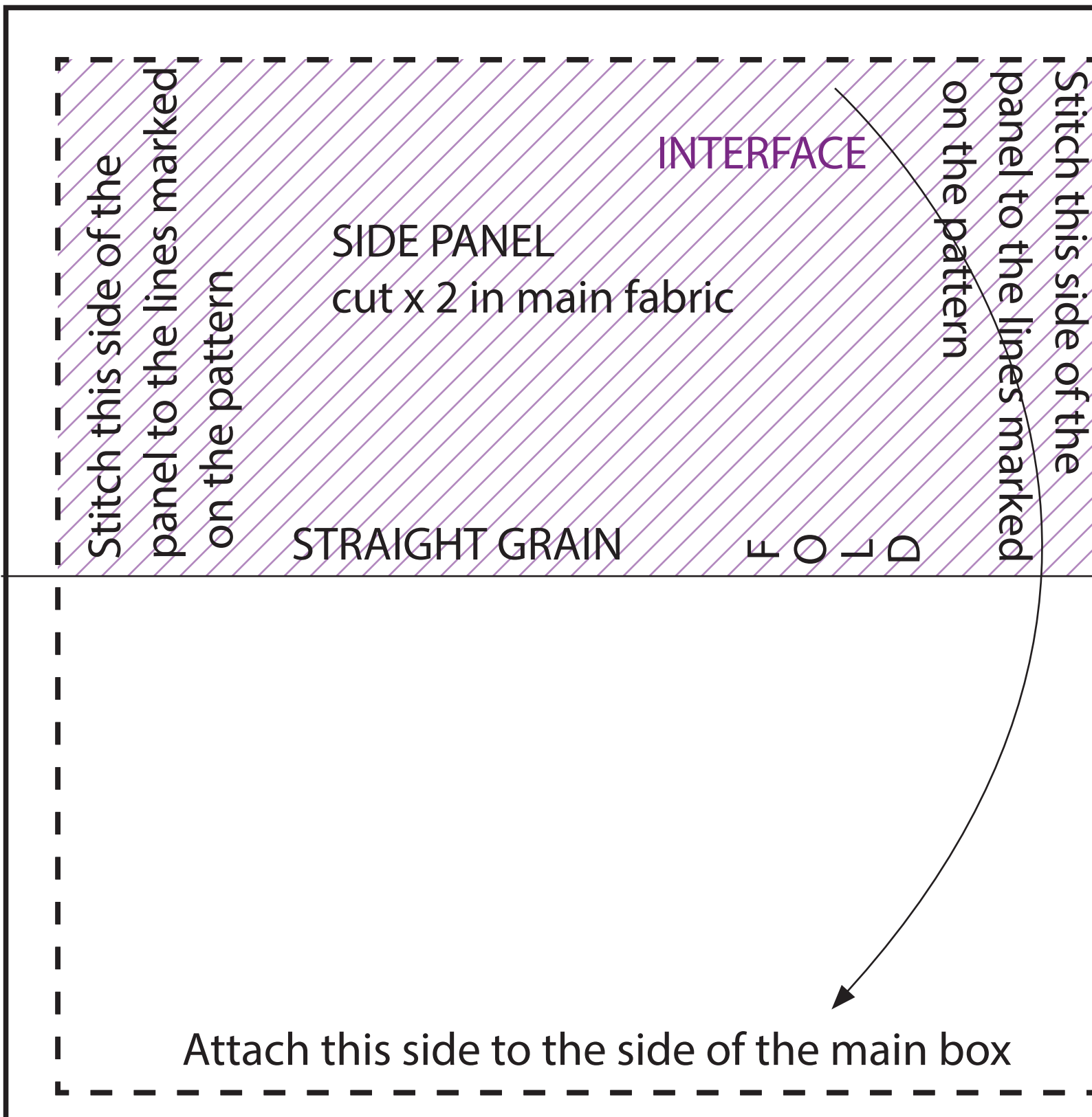


Handle placements

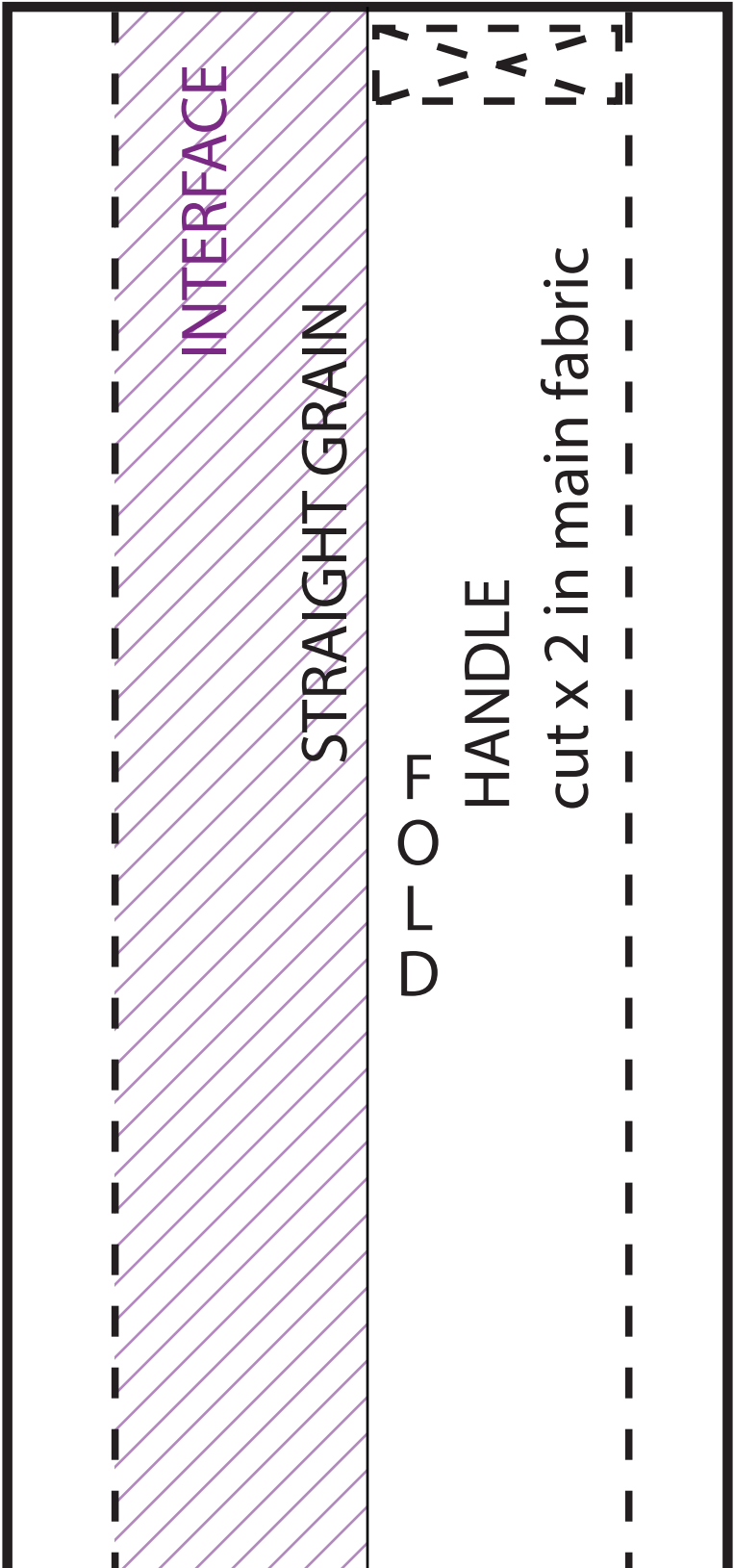
OUTER SHELL  
cut x 1 in main fabric  
cut x 1 in lining

or STRAIGHT GRAIN

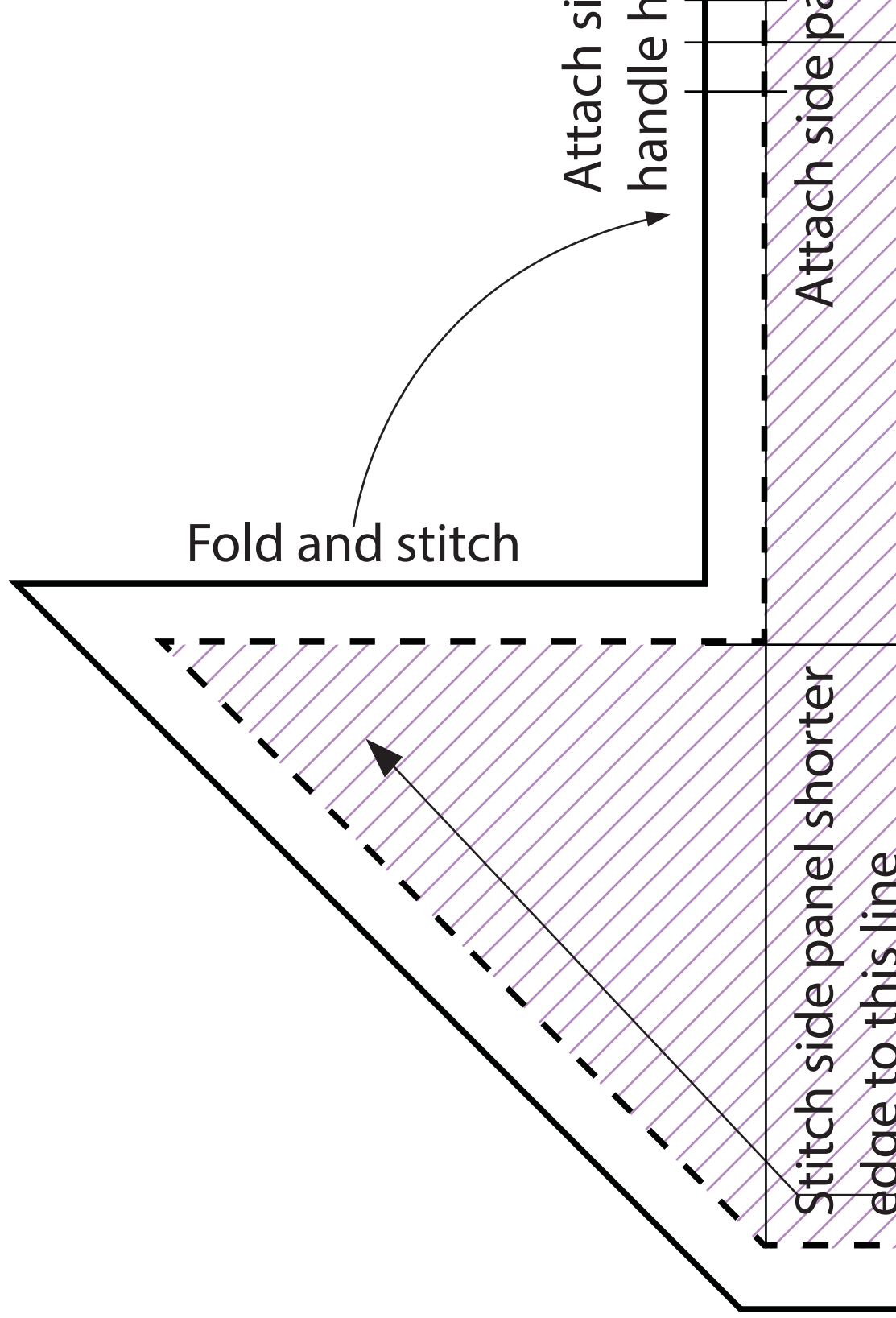




Stitch this side of the







OF STRAIGHT GRAIN

STRAIGHT GRAIN

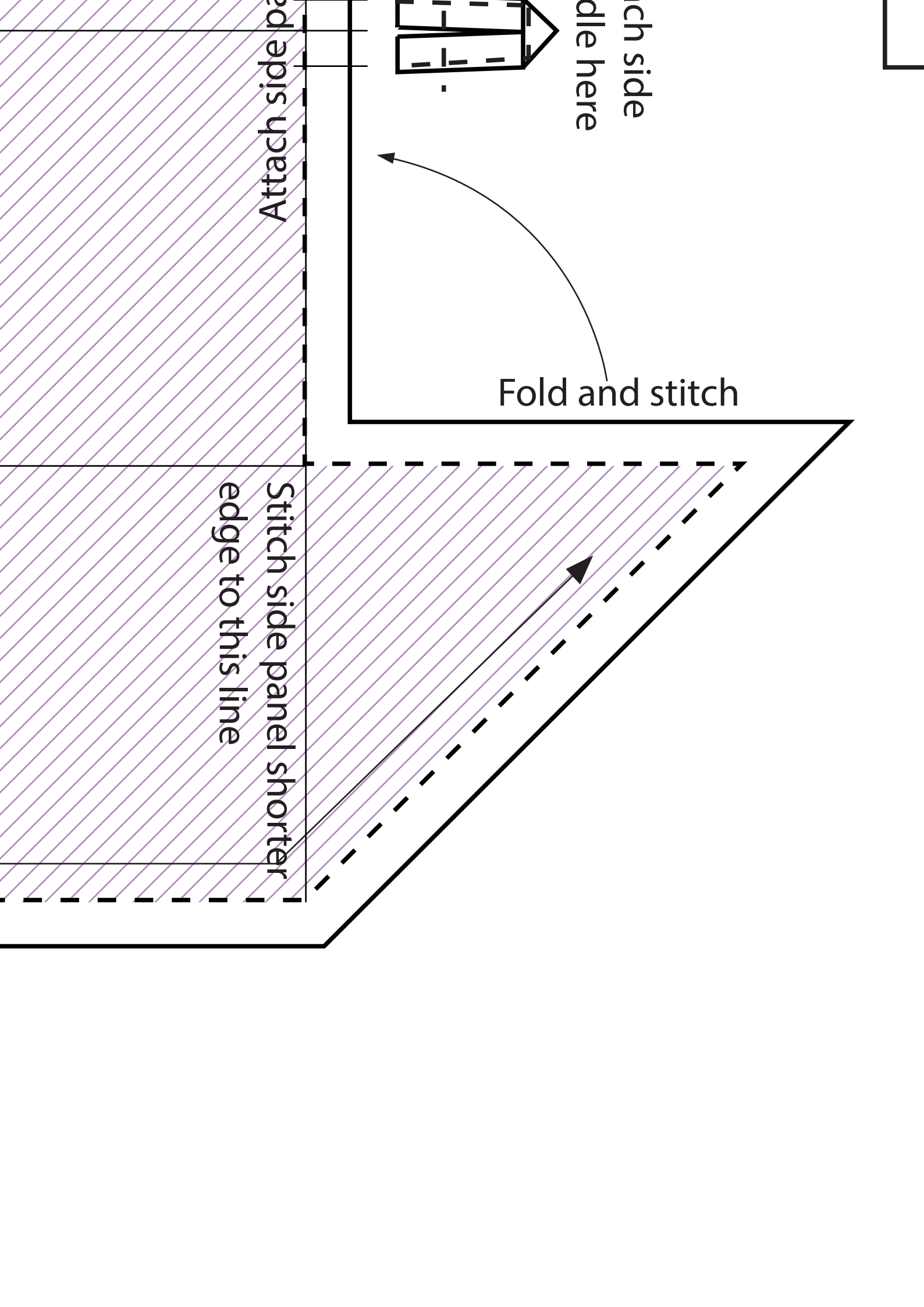
edge to this line

Handle placements

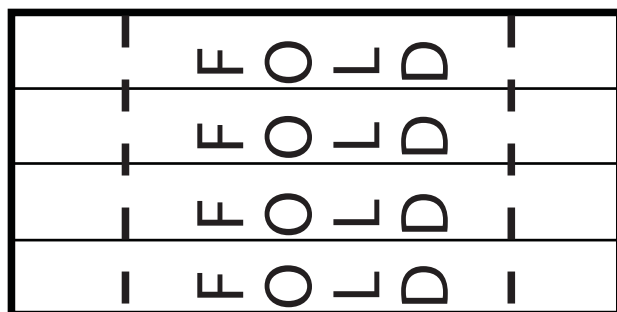


Install zipper along that edge

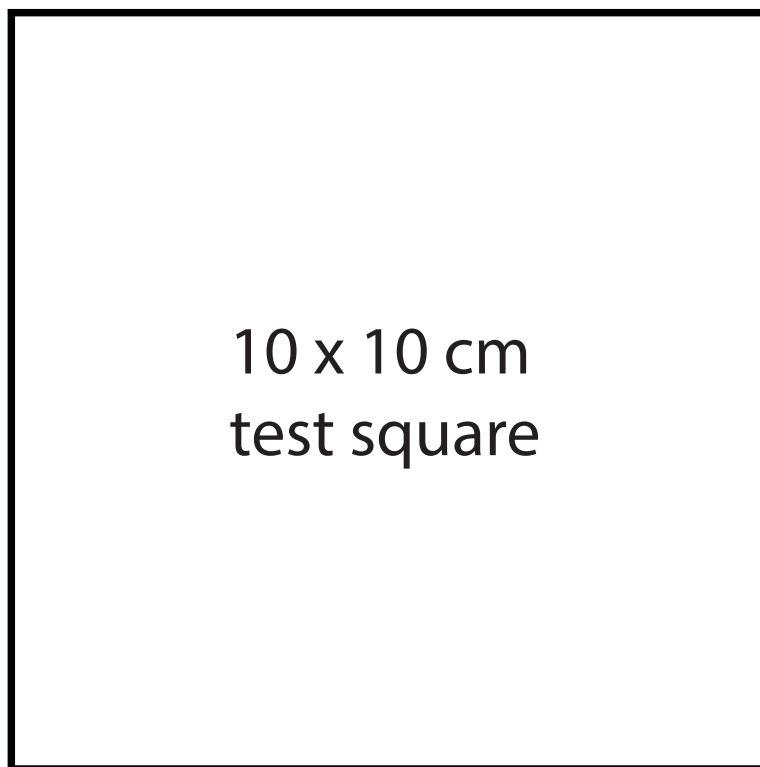


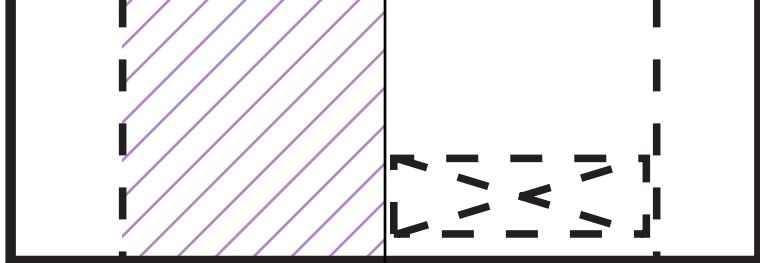


SIDE Handle  
cut x 2 in main gabric



Fold the edges inside  
then fold in the mid





side  
middle





## INSTRUCTIONS.

1. Interface all parts of the bag pattern as marked.;
2. Fold and stitch the handles; attach the handles to the main fabric on the place marks as shown on the pattern. Attach the handle edges with zigzag then do the rest of the stitches;
3. Install zipper along the lines shown on the pattern placing it between the main fabric and the lining;
4. Fold and stitch side panels;
5. Fold and stitch the little side handles as shown on the pattern;
6. Attach side handles as shown on the pattern;
7. Fold the edges with the zipper ends towards the sides of the box (as shown on the pattern) placing the zipper ends over the side handles and stitch;
8. Attach side panels to the sides of the box as shown on the pattern hiding all the seam edges inside. You can do it two ways: attach the side panel and treat the seam edge with bias binding or you can attach one part of the side panel, then flip the other side over the seam hiding it inside and stitch.
7. Stitch side panel shorter edges along the lines shown on the pattern so that three sides of the side panels are attached to the box thus holding the box together.

If you are going to share your creation on social media - please tag me! I would love to see your results!

Instagram: [@victoriakonash](#)

Facebook: [@vixecodesigns](#)